



FIONA STANLEY HOSPITAL (TRIPLE M ELECTRICAL AND AIR CONDITIONING)

Opened in October 2014, the Fiona Stanley Hospital is the largest construction project ever commissioned by the WA Government. Polyaire's Firebreak flexible duct was chosen to distribute air throughout the complex architectural building because of its combination of superior insulation and fire compliance. With less temperature gain/loss in void spaces, better transference to rooms, the high levels of efficiency reduce ongoing costs and ensure comfort. Meeting all BCA standards the product remains independently fire rating certified.

Comfort for patients in up to 783 beds and an army of hospital staff within the 6,400 room building was a major priority when the initial specifications were being considered. Equal to this was safety so meeting relevant fire rating compliances was of paramount importance.

\$2BN

PROJECT

6,400

ROOMS

2009-2013

TIMELINE &
MULTI PHASE
CONSTRUCTION

Supplied
Fire Rated Flexible Duct





COMPLETE & COMPLIANT CLIMATE CONTROL SOLUTIONS FOR MEDICAL FACILITIES.

In any building the climate control system needs to ensure a comfortable environment for occupants, and there is no place where occupants can benefit more from comfort than a hospital.

Polyaire understands the high standards in performance required for climate control systems in medical facilities. Continual advances in medical technology require the best in temperature monitoring, precise control and reliable, clean air distribution.

Polyaire's specialist commercial staff have strong experience working with leading building consultants to deliver solutions to exact requirements for medical facilities throughout Australia and the Asia-Pacific region.

SUNSHINE COAST UNIVERSITY HOSPITAL (AE SMITH)



\$2BN
TOTAL PROJECT
VALUE

450-900
BEDS

MAJOR
INSTALLATION
OF POLYAIR
PRODUCTS

Supplied

- Cushion Boxes
- Grilles and Diffusers

When the Sunshine Coast University Hospital (SCUH) opens in April 2017 it will revolutionise healthcare on the Coast and offer a range of free public hospital services. SCUH will be supported by highly trained and specialised staff, who will safely care for patients with complex or life-threatening conditions. This means about 10,000 patients each year will not have to travel to Brisbane for complex treatment.

The hospital will open with about 450 beds in April 2017, with ability to grow to more than 738 beds. It can be expanded to 900 beds beyond 2021 if needed.

VITAL CLIMATE CONTROL

Polyaire worked with the architects and building consultants from the early stages of the project. After forging initial positive business relationships we were able to demonstrate we could offer competitive pricing, and a wide range of grilles and other products to choose from. We were able to work with the architects in making the best design choice for their greater vision.

For specialist areas of the hospital, such as clean rooms and operating theaters, our MTO capabilities helped to deliver stainless steel grilles built to exacting technical standards. At the request of the construction engineers we ran internal quality controls to ensure we supplied faultless products, which along with our tightly managed logistical capabilities made sure the customer received what they needed, when they needed it and there was no down time.

Given the size and scale of the project, the fact it ran so smoothly for everyone involved in the climate control systems part of the project, it is a testament to Polyaire's commitment to quality, competitive pricing, delivery on time and customer service.





HOLMESGLEN PRIVATE HOSPITAL
(AE SMITH)

Set to open in 2017, Holmesglen will herald a new era in the provision of healthcare for residents in Melbourne's bayside suburbs.

147
BEDS & UP TO 20 TREATMENT SPACES

- Supplied*
- Bar Grilles
 - Swirl Grilles
 - Liner Slot Grilles
 - Cushion Boxes
 - Flexible Duct



CO-HEALTH FOOTSCRAY
(AUSCOOL)

Multi facet community health centre in a highly popular inner western suburb of Melbourne.



HIGH DENSITY
BUSY, PUBLIC HEALTH SPACE

- Supplied*
- Cushion Boxes
 - Weather Louvers
 - Vertical Circular Diffusers
 - Return Air Grilles



ST JOHN OF GOD HOSPITALS
(OP INDUSTRIES AND D&E)

Chooses the best in building services to help meet their aim in delivering excellence in every aspect of patient care and comfort.



REPUTED
NON FOR PROFIT HEALTHCARE PROVIDER

- Supplied*
- Flexible Duct
 - TROX VFL Dampers



EPWORTH HOSPITALS

Forward thinking management create modern, clean and comfortable spaces for their patients, and choose the best products to help with this, but also demand value.

LARGEST
PRIVATE SECTOR REHAB CENTRE IN VICTORIA

- Supplied*
- Flexible Duct
 - Cushion Boxes
 - Linear Slot
 - Bar Grilles



PRINCE ALFRED

With 638 beds, "The Alfred" is the epicenter of emergency healthcare in Victoria.

MAJOR
VICTORIAN EMERGENCY HOSPITAL

- Supplied*
- Flexible Duct
 - Cushion Boxes
 - Grilles



HOBART HOSPITAL TEMP MENTAL HEALTH BUILDING
(RIGHT CLIMATE)

A facility that creates a calming atmosphere for vulnerable people requires precise and reliable climate control.

CENTRE
OF MENTAL HEALTHCARE IN HOBART

- Supplied*
- Perforated Security Grilles
 - Bar Grilles
 - Cushion Boxes



CSL PARKVILLE
(C&G)

An industry leader in medical scientific research demands consistent temperatures for sensitive equipment, samples and chemicals.



GLOBAL
BIO THERAPY INDUSTRY LEADER

- Supplied*
- Cushion Boxes
 - Swirl Diffusers
 - Linear slot



NORTHERN HOSPITAL, EPPING
(QUADRANT)

Northern Health is the key provider of public healthcare in Melbourne's northern region.

400
BEDS

- Supplied*
- Perforated Security Boxes
 - Cushion Boxes
 - Swirl Diffusers
 - Linear slot



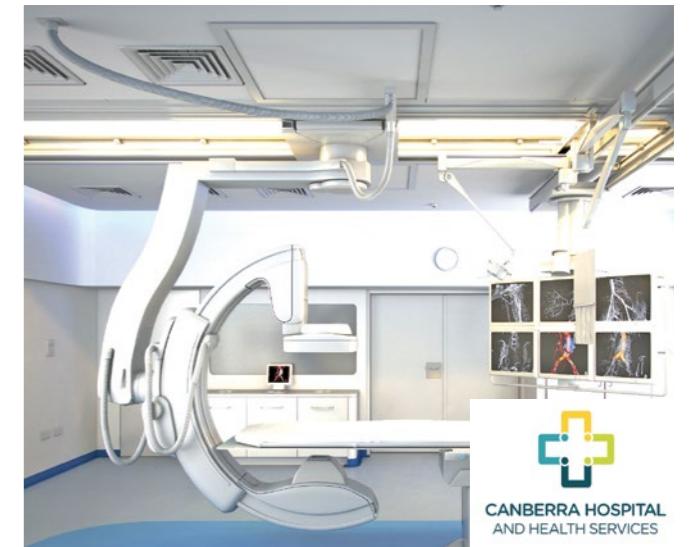
CANBERRA HOSPITAL BUILDING 15 UPGRADE
(KING AIR)

The ACT Government has invested heavily in medical facilities upgrades in recent years, including the new 2,020m² Building 15 at the Canberra hospital. Strict requirements for system reliability, efficiency, durable and strong components, and delivery on time were met by Polyaire's Commercial team.

Polyaire's duct and fittings are built for maximum efficiency and when installed correctly will not leak and maintain constant system pressure.

2,020M²
BUILDING AREA

- Supplied*
- Fire Rated Flexible Duct
 - Dampers
 - Cushion Boxes



DHULWA MENTAL HEALTH UNIT
(FREDON)

Recent renovation and facilities upgrade of a major 24 hour mental health facility in Australia's Capitol.

\$43.5M
FACILITIES UPGRADE

- Supplied*
- Swirl Diffusers
 - Cushion Boxes
 - Fire Rated Flexible Duct
 - Dampers



CANBERRA INSTITUTE OF TECHNOLOGY NURSING SCHOOL
(FREDON)

Upgrade of climate control systems for busy medical teaching facility.

BUSY
TEACHING LOCATION

- Supplied*
- Grilles
 - Cushion Boxes
 - Flexible Duct



OTHER PROJECTS

Bega Nursing Home
ACES

Southern Cross Care
Thermal Air

Hyson Mental Health
ACES

Uniting Care Gordon
Enviromech

National Capital Private Hospital
Allstaff

Gold Coast University Hospital
AE Smith

Bundaberg Bay oral Health
MVO Services

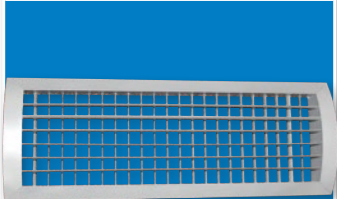
Hervery Bay oral Health
MVO Services

Byron Bay Hospital
ACES

Robina hospital A&E
East Coast Mechanical

polyaire Commercial

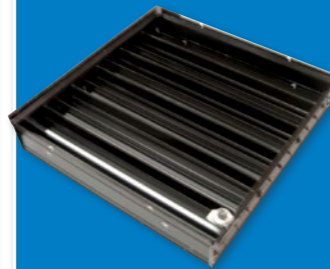
DOUBLE DEFLECTION
REGISTERS



SQUARE CEILING DIFFUSERS



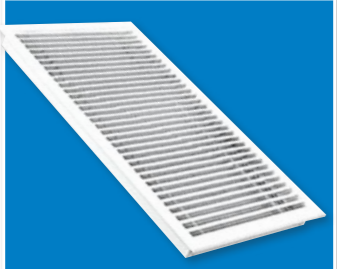
OPPOSED BLADE DAMPERS



CIRCULAR
DIFFUSERS



HALF CHEVRON LOUVRES



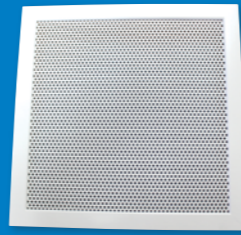
SQUARE PLAQUE CEILING
DIFFUSERS



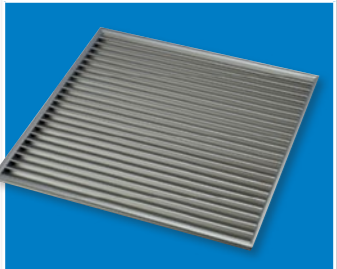
CUSHION BOXES & PLENUM
BOXES / POLYPANEL



PERFORATED
DIFFUSERS



DOOR RELIEF
GRILLES



ACUTHERM VAV
THERMAFUSERS



EVAPORATIVE
SUPPLY PLENUMS



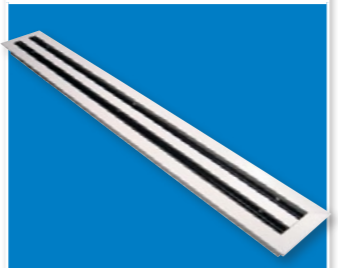
CURVED BLADE DIFFUSERS



EGG CRATE
GRILLES



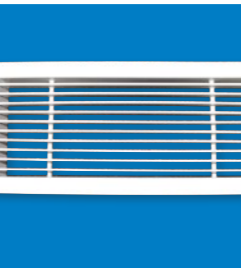
LINEAR SLOT DIFFUSER



FLEXIBLE
DUCTING



LINEAR BAR
GRILLES



POLYAIRE COMMERCIAL IS A DIVISION OF THE POLYAIRE GROUP OF COMPANIES AND IS A LEADER IN THE SUPPLY OF AIR CONDITIONING COMPONENTS.

With a focus on Commercial HVAC segment, Polyaire Commercial has been involved with various scales of projects from small offices to Convention Centres, Hospitals and various high profile high-rise buildings.

With operations across Australia in all major cities and certain regional areas, Polyaire Commercial is well positioned to service the industry with high quality, readily available products and experienced people.

The benefits of dealing with Polyaire Commercial:

People

At Polyaire Commercial, we can support your business with a dedicated commercial team that has extensive industry experience in all areas including sales, estimating, engineering, project management, warehousing and logistic support.

Stock

Polyaire Commercial holds in stock an extensive range of products including flexible duct, grilles and metal cushion head boxes. This is to ensure your needs are met when you need it.

Lead time and local manufacture

The Polyaire Group is a leading manufacturer of quality HVAC products for over 40 years. We have continued to innovate and improve our manufacturing processes to produce a high quality product at a lower cost. We also have the ability to locally manufacture specialised made to order products at short lead times and at a very competitive cost.

With the above points in mind Polyaire Commercial are well placed to service your business/project requirements with our products and service capabilities, across Australia.





Polyaire Locations

Polyaire Head Office enquiries@polyaire.com.au
 11-13 White Rd Ph: (08) 8349 8466
 GEPPS CROSS SA 5094 Fax: (08) 8349 8446

New South Wales sales.nsw@polyaire.com.au
 Unit 2/167 Prospect Hwy Ph: (02) 8811 1333
 SEVEN HILLS NSW 2147 Fax: (02) 9620 8088
 Unit 2/6 Church Road Ph: (02) 9600 8799
 MOOREBANK NSW 2170 Fax: (02) 9600 8115
 Unit 10/33 Maddox Street Ph: (02) 9557 6948
 ALEXANDRIA NSW 2015 Fax: (02) 9557 6954
 70 Mitchell Road Ph: (02) 4954 6677
 CARDIFF NSW 2285 Fax: (02) 4954 6033
 22 Schiller Street Ph: (02) 6921 7606
 WAGGA WAGGA NSW 2650 Fax: (02) 6921 1987
 4 Young Street Ph: (02) 6884 4328
 DUBBO NSW 2830 Fax: (02) 6884 4362
 Unit 2/19-20 Goonan Street Ph: (02) 6765 3881
 TAMWORTH NSW 2340 Fax: (02) 6762 3705
 107 North Street Ph: (02) 6021 7206
 ALBURY NSW 2640 Fax: (02) 6041 2090

ACT
 Units 5-7/13-17 Tennant Street
 FYSHWICK ACT 2609 Ph: (02) 6126 3600
 Fax: (02) 6228 1338

Queensland sales.qld@polyaire.com.au
 51 Navigator Place Ph: (07) 3866 8700
 HENDRA QLD 4011 Fax: (07) 3866 8704
 3/60 Dulacca Street Ph: (07) 3273 8043
 ACACIA RIDGE QLD 4110 Fax: (07) 3273 6104
 2/3 Anisar Court Ph: (07) 5656 1900
 MOLENDINAR QLD 4214 Fax: (07) 5597 5985
 Unit 2, 5-7 Spalding Street Ph: (07) 4635 1122
 HARRISTOWN QLD 4350 Fax: (07) 4613 4100

South Australia sales.sa@polyaire.com.au
 11-13 White Road Ph: (08) 8349 5959
 GEPPS CROSS SA 5094 Fax: (08) 8349 6659
 1590 Main North Road Ph: (08) 8182 3347
 BRAHMA LODGE SA 5109 Fax: (08) 8182 3348
 9 Somerset Circuit Ph: (08) 8326 7063
 LONSDALE SA 5160 Fax: (08) 8186 1069

Western Australia sales.wa@polyaire.com.au
 1 Booth Place Ph: (08) 6241 0555
 BALCATTA WA 6021 Fax: (08) 9240 1484
 15 Opportunity Street Ph: (08) 9303 4506
 WANGARA WA 6065 Fax: (08) 9302 5420
 11 Spencer Street Ph: (08) 9414 1723
 COCKBURN CENTRAL WA 6164 Fax: (08) 9417 9329

Victoria sales.vic@polyaire.com.au
 76 Northgate Drive Ph: (03) 9465 8022
 THOMASTOWN VIC 3074 Fax: (03) 9465 5484
 9-15 Arkwright Drive Ph: (03) 9793 1611
 DANDENONG STH VIC 3175 Fax: (03) 9792 0501
 1 Grace Court Ph: (03) 9311 5679
 SUNSHINE WEST VIC 3020 Fax: (03) 9311 9571
 106 Barwon Terrace Ph: (03) 5221 7644
 SOUTH GEELONG VIC 3220 Fax: (03) 5221 8299
 6/100 New Street Ph: (03) 9876 0633
 RINGWOOD VIC 3134 Fax: (03) 9879 2233

Visit www.polyaire.com.au for international office contact details.