

## ACT / ADMA-NCC (BCA) Flexible Duct, Thermal & Fire Rating Requirements from May 1 2013

### Domestic Applications

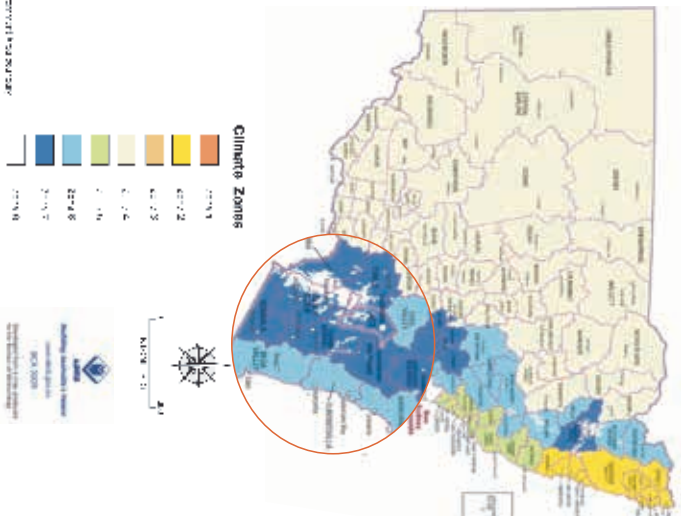
**BCA 2013 is mandatory for all Class 1 + 10 domestic buildings in ACT issued with a building permit from May 1 2013.**

#### BCA 2013 specifics:

- "Material R Values" ( $R_m$ ) (R Value of insulation only) must be used on flexible duct and fittings, tested to AS/NZS 4859.1 "Total R Values" ( $R_t$ ) are not acceptable nor is quoting insulation thickness and or weight instead of a Material R-value ( $R_m$ ).
- All duct in a heating system that is grafted by a flame must be fire rated to AS 4254.1:2012
- $R_m$  0.4 for oil fittings in oil installation.
- $R_m$  1.0 for oil duct in oil heating only, refrigerated cooling only and evaporator only systems except zone 8 where  $R_m$  1.5 is required
- $R_m$  1.5 for oil duct in reverse cycle and hot on cooling systems, (see note)
- $R_m$  0.6 insulation can only be used on duct within "the insulated building envelope" e.g. in tier shafts and in between floors.

**Note:  $R_m$  1.0 may be used in reverse cycle and hot on cooling systems only in climate zone 7 if the ducts are:**

- Under a suspended floor within an enclosed perimeter or
- In a roof space that has insulation of not less than R 0.5 directly beneath the roofing i.e. above the duct. NB Sorting / reflective foils can usually achieve R0.5.



### Commercial Applications

**BCA 2013 is mandatory for all commercial buildings in ACT issued with a building permit from May 1 2013**

#### BCA 2013 specifics:

- "Material R Values" ( $R_m$ ) (R Value of insulation only) must be used on flexible duct and fittings, tested to AS/NZS 4859.1 "Total R Values" ( $R_t$ ) are not acceptable nor is quoting insulation thickness and or weight instead of a Material R-value ( $R_m$ ).
- All duct in oil systems must be fire rated to AS 4254.1:2012
- $R_m$  2.0 duct and fittings must be used on oil in heating, cooling and evaporative installations unless:

- Duct is no more than 3 metres in length to an outlet or from an inlet then  $R_m$  1.0 is acceptable.
- Duct and fittings are installed within a "conditioned space" which require Zone 7,  $R_m$  1.2, Zone 8,  $R_m$  1.6.
- Duct and fittings are installed in Zone 8 which requires  $R_m$  R 2.4.

Contractors/homeowners need to ensure that only duct with a designated and appropriate Material R-Value ( $R_m$ ) or Total R Value ( $R_t$ ) is installed and that documentary evidence is available to demonstrate that required thermally rated duct has been ordered, supplied and installed by the duct supplier.

The supply of a "letter of certification", "letter of compliance" or equivalent, by a builder that indicates compliance, demonstrates that regulatory standards have been followed. The failure to install thermally and fire rated compliant product may breach state or local regulations, builders' guarantees, or the Trade Practices Act, possibly triggering make-good provisions, and may extend for some years depending on local regulations and building contracts.

This is a guide only. Please confirm this information with your territory regulator

## New South Wales / ADMA-NCC (BCA) Flexible Duct, Thermal & Fire Rating Requirements from May 1 2013

### Domestic Applications

**BCA 2013 is mandatory for all Class 1 + 10 domestic buildings in NSW issued with a building permit from May 1 2013:**

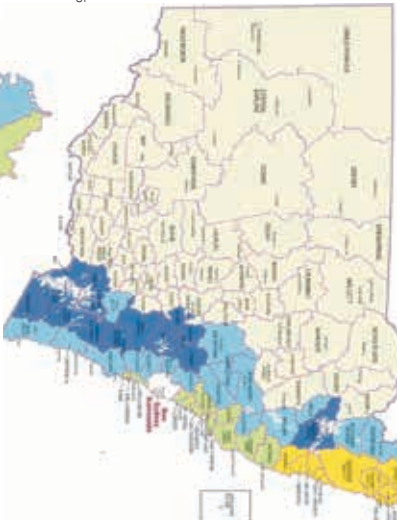
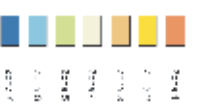
#### BCA 2013 specifics:

- Material R Values (R Value of insulation only) must be used on flexible duct and fittings tested to AS/NZS 4859.1. It is not acceptable to quote on insulation thickness and/or weight instead.
- All local R Values (R<sub>l</sub>) systems that is applied by a flame must be fire rated to AS 4254.1:2012
- R<sub>m</sub> 0.4 for fittings in all installations.
- R<sub>m</sub> 0.6 insulation can only be used on duct within the insulated building envelope e. g in riser shafts and in between floors
- R<sub>m</sub> 1.0 for duct in all heating only refrigerated cooling only and evaporative cooler only systems (except zone 8, R<sub>m</sub> 1.5 is required)
- R<sub>m</sub> 1.5 for duct in all reverse cycle and odd on cooling systems, except in climate zones 2 and 5 where R<sub>m</sub> 1.0 is acceptable (see note).

**Note: R<sub>m</sub> 1.0 may be used in reverse cycle and odd on cooling systems only in climate zones 4, 6 and 7 if the duct is:**

- Under a suspended floor within an enclosed perimeter or
  - In a roof space that has insulation of not less than R 0.5 directly beneath the roofing i.e. above the duct, NB Staking / reflective foils can usually achieve R0.5.
- Note:** Class 1 & 10 buildings are subject to BASIX but still use section 3.1.2.5.3 for flexible duct.

#### Climate Zones



#### Sydney Surrounds

#### Sydney Urban



### Commercial Applications

**BCA 2013 is mandatory for most classes of commercial buildings in NSW issued with a building permit from May 1 2013 including:**

Building classes 3, 5, 6, 7, 8, 9.

**Note:** Class 2 and a class 4 are subject to BSBX but still use section 1 for flexible duct.

#### BCA 2013 specifics:

- "Material R Values" (R<sub>m</sub>) (R Value of insulation only) must be used on flexible duct and fittings, tested to AS/NZS 4859.1 "Total R Values" (R<sub>t</sub>) are not acceptable nor is quoting insulation thickness and or weight instead of a Material R-value (R<sub>m</sub>).
- All duct in all systems must be fire rated to AS 4254.1:2012
- R<sub>m</sub> 2.0 duct and fittings must be used on all in heating, cooling and evaporative installations unless:
- Ducts no more than 3 metres in length to an evaporative cooling system, within a "conditioned space" which require Zones 2 and 5 - R<sub>m</sub> 1.2, Zones 4, 6 and 7 - R<sub>m</sub> 1.2 and zone 8 - R<sub>m</sub> 1.6.
- (c) Duct and fittings are installed in Zone 8 which requires R<sub>m</sub> R 2.4.
- Dependent on building class and sub class BASIX requirements may also apply.

Contractors/homeowners need to ensure that only duct with a designated and appropriate Material R-Value (R<sub>m</sub>) or Total R Value (R<sub>t</sub>) is installed and that documentary evidence is available to demonstrate that the duct system has been properly ordered, supplied and installed by the duct supplier.

The supply of a "letter of certification", "letter of compliance", or equivalent, by a builder that indicates compliance, demonstrates that regulatory standards have been followed. The failure to install thermally and fire rated compliant product may breach state or local regulations, builders' quarantines, or the Trade Practices Act, possibly triggering make-good provisions, and may extend for some years depending on local regulators and building contracts.